

# Update on NSF's Social, Behavioral, and Economic Sciences Directorate

Fay Lomax Cook

Assistant Director; National Science  
Foundation; Social, Behavioral  
& Economic Sciences Directorate

Consortium of Social Science Associations  
Annual Meeting, March 15, 2016

NATIONAL  
SCIENCE  
FOUNDATION  
F P S C A L  
V E A R  
2 0 1 7  
B U D G E T  
R E Q U E S T



# Overview

- I. SBE FY2016 Budget and FY2017 Request
- II. Cross-Directorate Initiatives
- III. Dealing with Congress
- IV. Ways to Get Involved



# SBE supports basic research and training to create knowledge that improves the future.



Auctioning the Airwaves



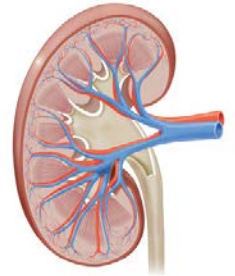
Safeguarding our Troops



Understanding the Brain



Optimizing Development



Life-saving Kidney Exchanges



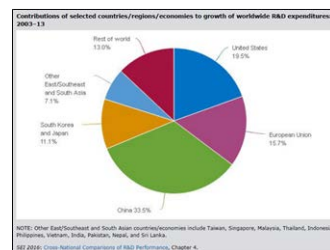
Securing Cyberspace



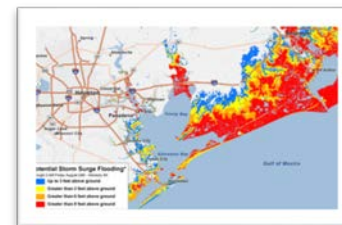
Enhancing Learning



Exploring Origins



Tracking the S&E Enterprise



Improving Warning Systems



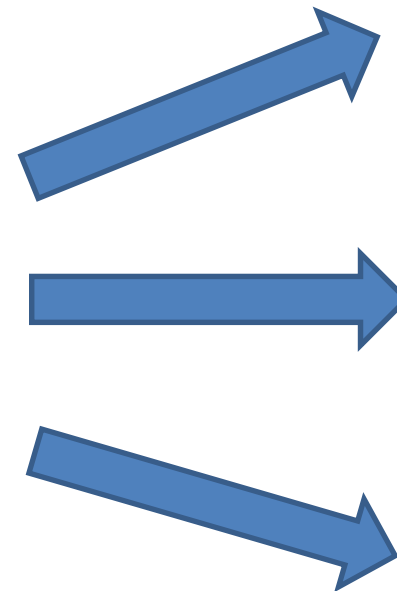
Finding our Way



Predicting Conflict

# SBE: Supporting basic research and training to create knowledge that improves the future.

SBE investments in research and training



Advances Knowledge

Drives the U.S. Economy

Enhances National Security

Sustains U.S. Global Leadership

Improves Lives

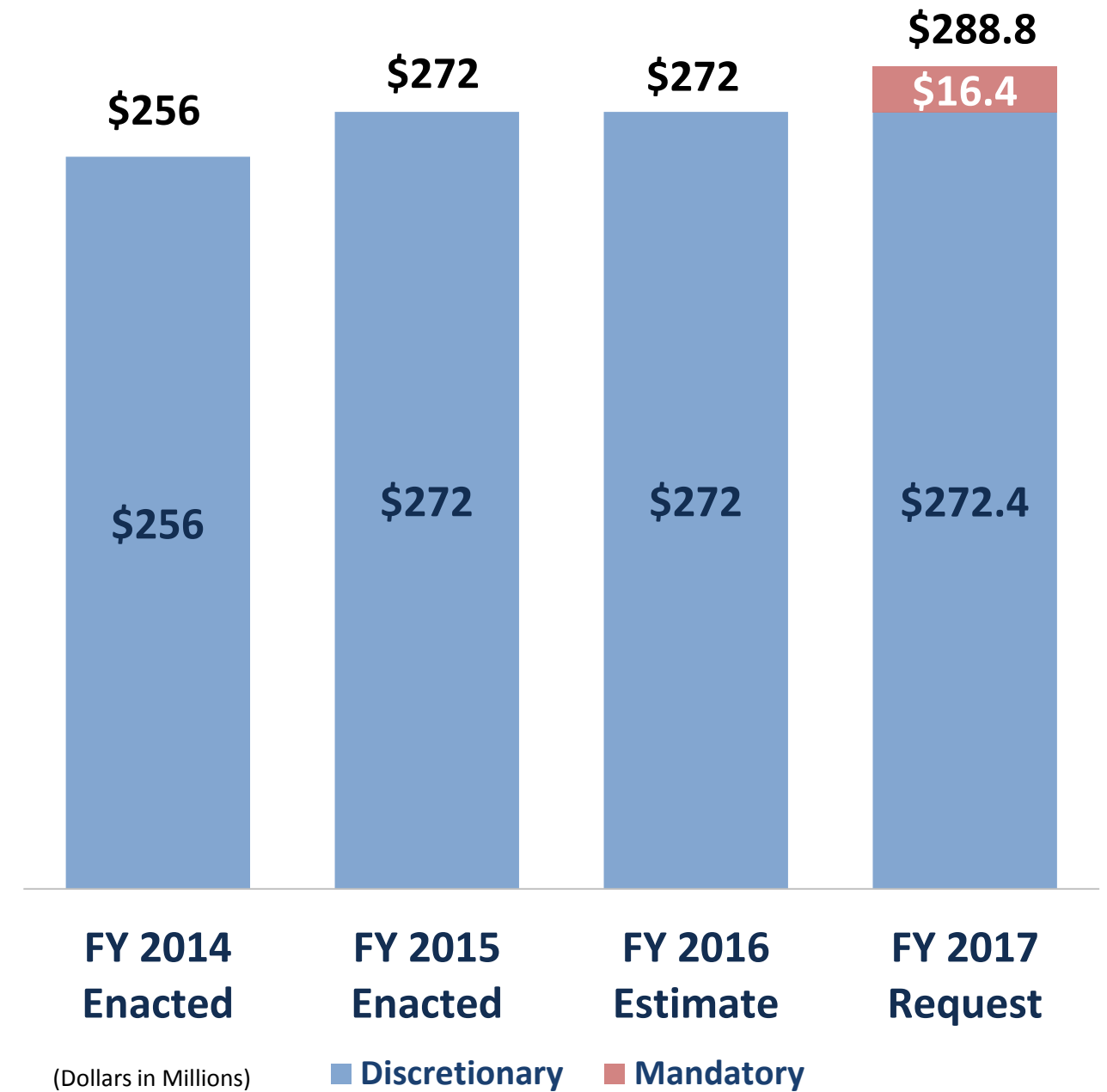
# GOALS OF SBE SUPPORTED BY FY 2017 BUDGET

- To advance fundamental knowledge in the SBE sciences through research investments
- To capitalize on synergies that emerge when individual disciplines converge on common research questions through supporting interdisciplinary research and training
- To add a comprehensive understanding of human behavior to cross-directorate activities
- To support the National Center for Science and Engineering Statistics' work as the Nation's leading provider of statistical data on the Science and Engineering enterprise



# SBE BUDGET OVERVIEW

- SBE FY 2016 budget estimate is \$272 million
- SBE FY 2017 request is **\$288.8 Million**
- Increase of **6%** over FY 2016 estimate



# ACTIVITIES TO BE SUPPORTED WITH MANDATORY FUNDING

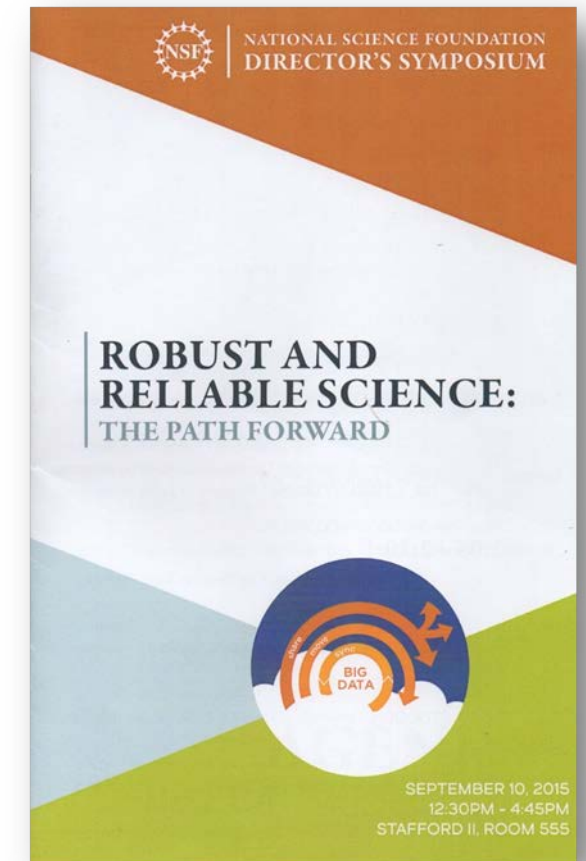
- **Core research programs**
  - \*\*Early career investigators
  - \*\*Workshops on proposal development, robust and reliable research designs, data-sharing, analytical techniques; new approaches to human neuroscience research
- **Enhancement of robust and reliable science**





# ROBUST AND RELIABLE SCIENCE

- Support workshops on robust and reliable research (e.g., study design, data-sharing approaches, and analytic techniques);
- Support research to replicate and generalize pivotal disciplinary findings; and
- Support research to improve robust and reliable science.



September 10, 2015



# CROSS-DIRECTORATE INVESTMENTS: SBE INVESTIGATES THE HUMAN DIMENSION OF CRUCIAL SOCIETAL CONCERNS



1. Understanding the Brain (UtB)
2. Risk and Resilience: Critical Resilient Interdependent Infrastructure and Systems (CRISP)



3. Innovations at the Nexus of Food, Water, and Energy Systems (INFEWS)



4. Inclusion across the Nation of Communities of Learners of Underrepresented Discoverers in Engineering and Science (NSF INCLUDES)



# OTHER MAJOR INVESTMENTS

- Cyberinfrastructure Framework for 21<sup>st</sup> Century Science, Engineering, and Education (CIF21)
- Smart and Connected Communities
- Secure and Trustworthy Cyberspace (SaTC)

# Dealing with Congress

## Wastebooks:

- Three in the last 6 months
- Responses are online  
<http://www.nsf.gov/about/congress/toolkit.jsp>

## Hill Meetings

- Appropriations Committee
- Science Committee
- Senator Reid's Staff
- More Meetings to Come



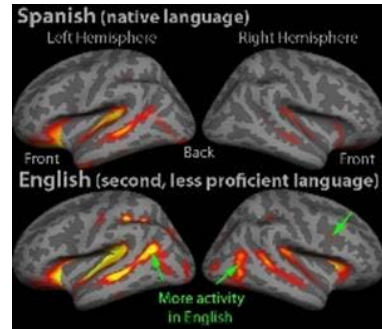
# Ways to Get Involved

- Program Officers
- Panelists
- Help us Communicate our Message
  - Share findings with us for new communication materials
  - Write op-eds about important findings from SBE science
  - Share SBE fact sheets and program solicitations with your networks
  - Open a dialogue with us on any other way you would like to be involved





# At the Center of it All: Human Behavior and Social Institutions



Social, Behavioral, and  
Economic Sciences



THANK YOU!

[fcCook@nsf.gov](mailto:fcCook@nsf.gov)

Follow us at @NSF\_SBE

