



NIH and the Behavioral and Social Sciences

William Riley, Ph.D.
Director
Office of Behavioral and Social Sciences Research

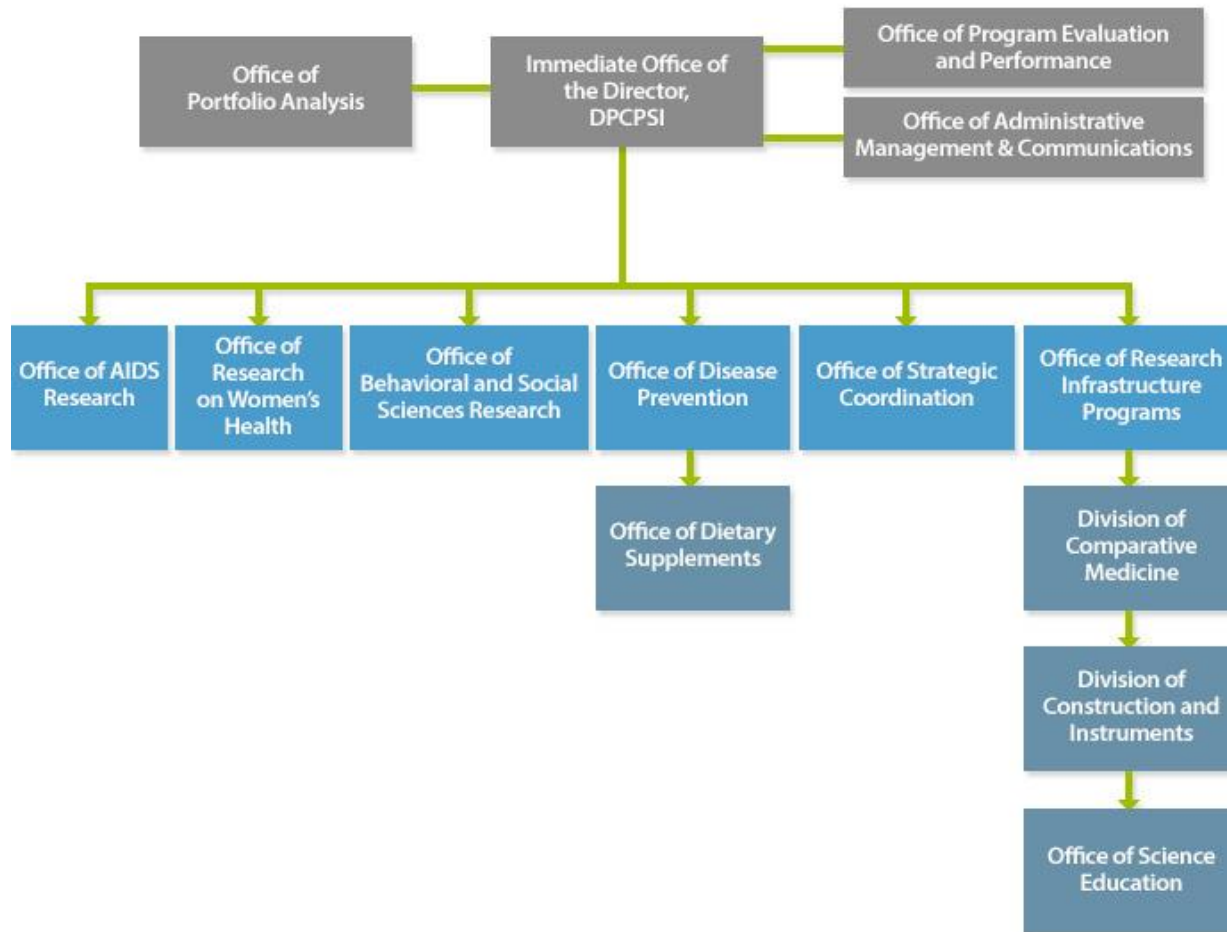
OFFICE OF BEHAVIORAL AND SOCIAL SCIENCES RESEARCH
NATIONAL INSTITUTES OF
HEALTH



Creation of the Office of Behavioral and Social Sciences Research

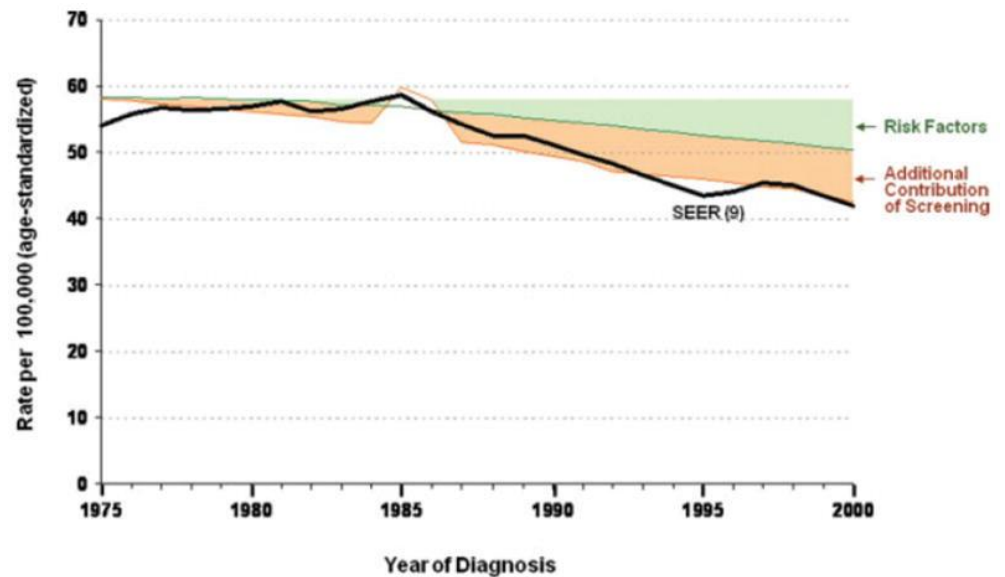
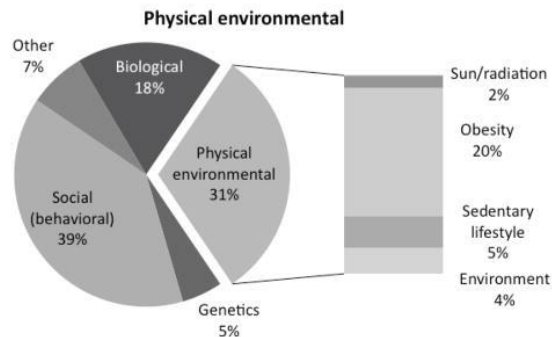
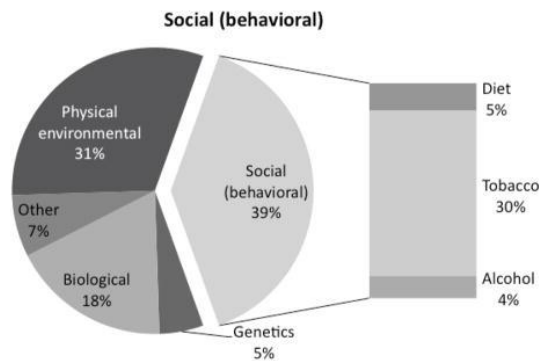
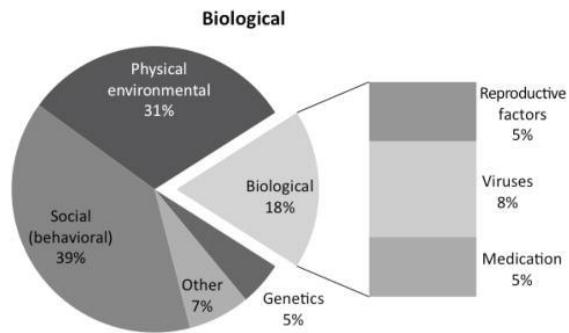
- Established by Congress in 1993 and created in 1995
- Responsibilities:
 - provide BSSR leadership and coordination for NIH
 - inform and advise the NIH Director on BSSR
 - serve as the principal NIH spokesperson for BSSR
 - assess and ensure adequate BSSR support
 - promote interdisciplinary, integrated research
 - sponsor meetings on BSSR state of the science

Office of Behavioral and Social Sciences Research (OBSSR) in Division of Program Coordination, Planning, and Strategic Initiatives (DPCPSI)



Preventability of Cancer

(Colditz and Wei; 2012)



Decline in colorectal cancer incidence partitioned between changing risk factors and screening. From Edwards et al. 2010 (43).

OBSSR Strategic Plans

- **1997 Strategic Plan**

- Enhance Behavioral and Social Sciences Research and Training
- Integrate Biobehavioral Perspectives in All NIH Research Areas
- Improve Communications Among Behavioral and Social Science Researchers and the Public

- **2007 Strategic Plan**

- Basic Science
- Interdisciplinary Research
- Systems Science
- Population Impact

Strategic Planning Process and Timeline

Sept: Internal Retreats

Oct: BSSR-CC and Strategic Plan Workgroup meetings

Nov: RFI on BSSR Challenges

Jan: Expert Panel Meeting and IC meetings

Mar: Begin Draft of Strategic Plan

Apr: Stakeholder Webinars

May: Finalize Plan

Strategic Plan Working Group

Wilson Compton (NIDA)

Bob Croyle (NCI)

Larry Fine (NHLBI)

James Griffin (NICHD)

Christine Hunter (NIDDK)

David Murray (ODP)

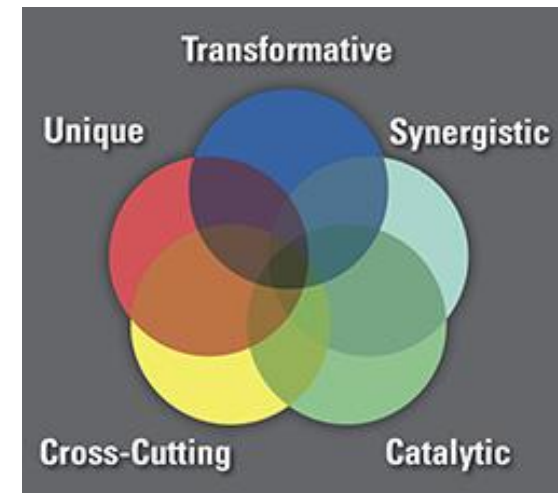
Lis Nielsen (NIA)

Kevin Quinn (NIMH)

Karyl Swartz (CSR)

Guiding Principles for 2016 Strategic Plan

- Integration of BSSR into the broader biomedical research efforts consistent with the NIH mission
- Coordination and collaboration with ICs
- Identify critical challenges that are barriers to advancement in BSSR (most impact to the largest proportion of behavioral and social science researchers)
- Focus on challenges that OBSSR is *uniquely* poised to address (if OBSSR didn't exist, it would not get done)



Early Glimpse into OBSSR Strategic Plan

- Strategic Scientific Priorities
 - Basic to Applied Pipeline
 - Methods and Measures
 - Implementation and Adoption
- Cross-Cutting Themes
 - Communication
 - Coordination and Integration
 - Training
 - Policy and Evaluation

OBSSR's Role in Major NIH Initiatives

- Precision Medicine Initiative
- Environmental Influences Child Health Outcomes
- Big Data to Knowledge
- NCCOR (National Collaborative on Childhood Obesity Research)
- OppNet (b-BSSR Opportunity Network)

Addressing Challenges

- Non Human Primate Research
 - Closing the Poolesville Facility
- HIV/AIDS Low Priority Research Areas
 - Epidemiology without a focus on HIV
 - Virology on co-infections, not in context of HIV
 - Data analysis and system tools not HIV related
 - Behaviors that have multiple negative outcomes

Addressing Challenges (Cont)

- Health Economics Outside NIH Interest
 - Financial well-being, labor market outcomes, etc. with a tie to health
 - Financing of healthcare and impacts on cost but not healthcare utilization or outcomes
 - Economics of health professions not related to health outcomes or access to quality care
 - Consumer demand and healthcare marketing strategies not tied to quality of care or health outcomes
 - Cost and efficiency of healthcare service delivery in which cost is the primary outcome without considering clinical outcomes or quality of care.

What You Can Do to Help

- Promote rigorous and impactful social and behavioral research
- Communicate recent research to highlight
- Promote the adoption of effective approaches
- Let us know you are concerned about – and also what you're happy about!